

The Intelligent Surveillance Solution

NUUO MainConsole & Visec LPR Integration User Guide

How to use LPR in NUUO Mainconsole

Necessary software and hardware:

1. Visec software and its license (to activate the Visec to be official version)
2. Prepare a camera which is support by NUUO and Visec

NUUO supportling list:

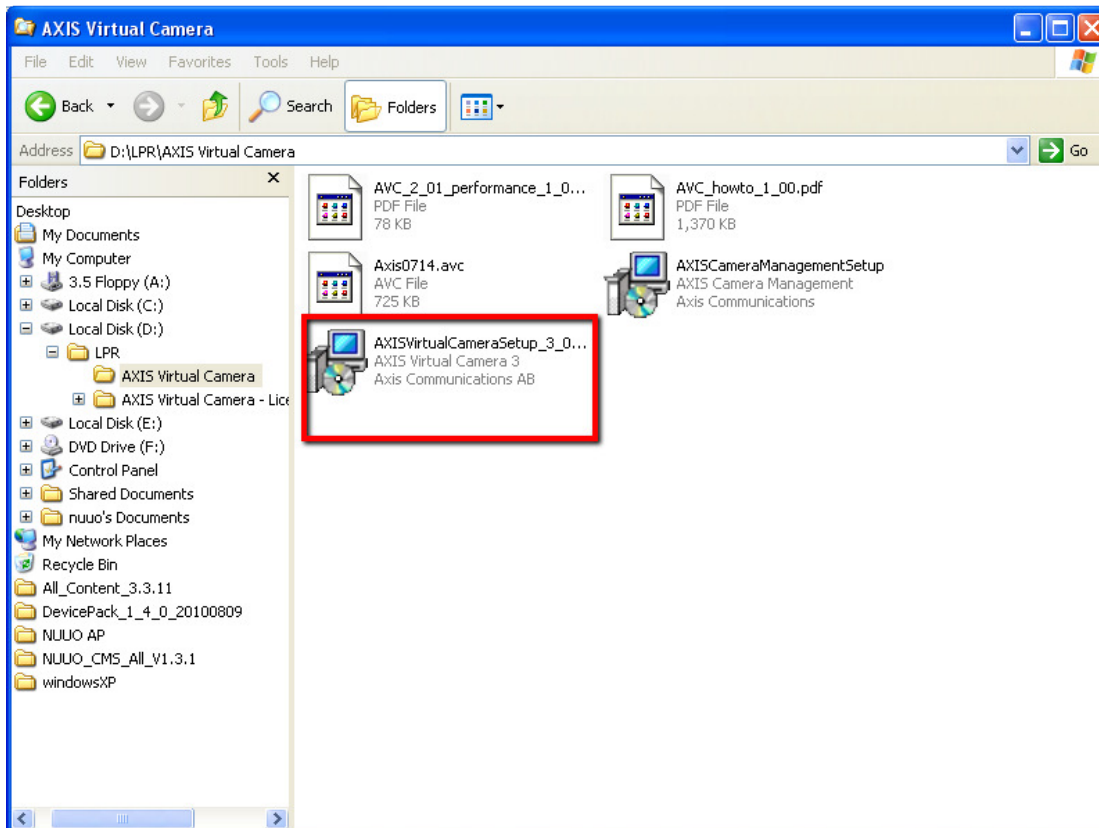
[http://support.nuuo.com/mediawiki/upload/0/06/NUUO IP- devicepack v1.11.0 Supported Camera Spec 110531.pdf](http://support.nuuo.com/mediawiki/upload/0/06/NUUO_IP- devicepack v1.11.0 Supported Camera Spec 110531.pdf)

Visec supporting list: <http://www.visecintl.com/faq.htm>

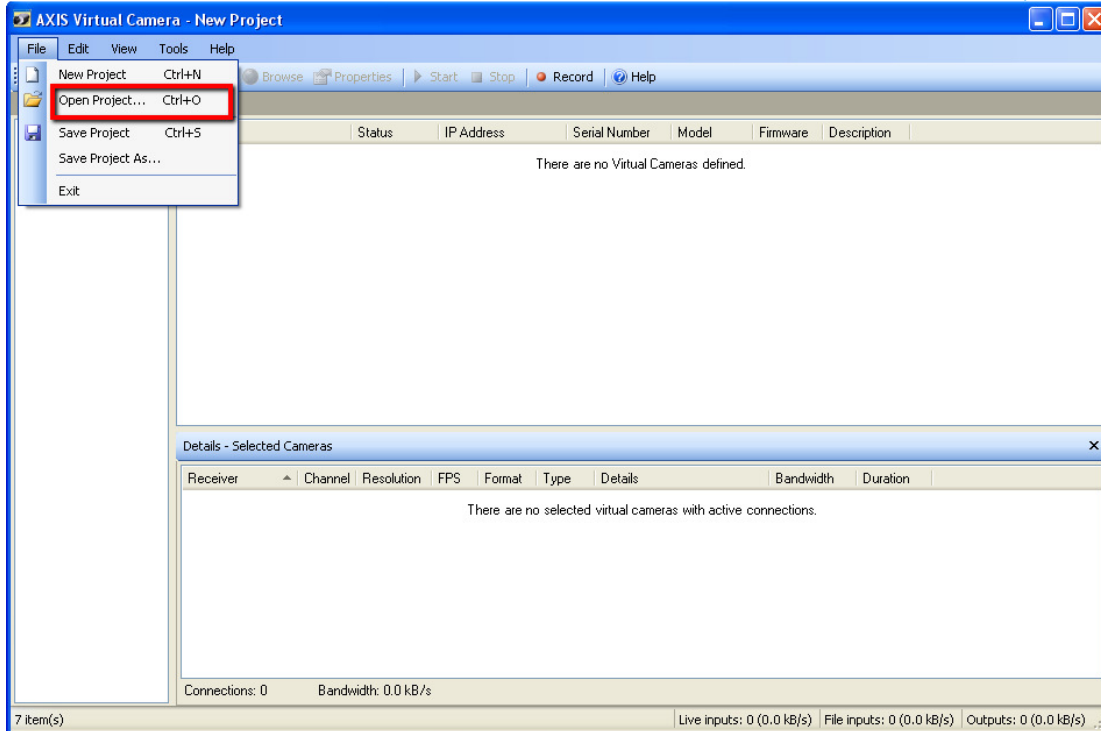
Visec supports all major IP camera including manufacturers AXIS, Arecont, IQ, ACTI, Panasonic, Airlink, Aviosys, Connectec, Dlink, Genius, EVo, Gadspot, Intellinet, Lynxs, NetSnap, Mobotix, Panasonic, Pixord, Raytalk, Sweex, Toshiba, Trendnet, Vision Tech, Vivotek and generic support for standard mjpeg. capture cards, USB capture devices and more.

-Axis Virtual Camera

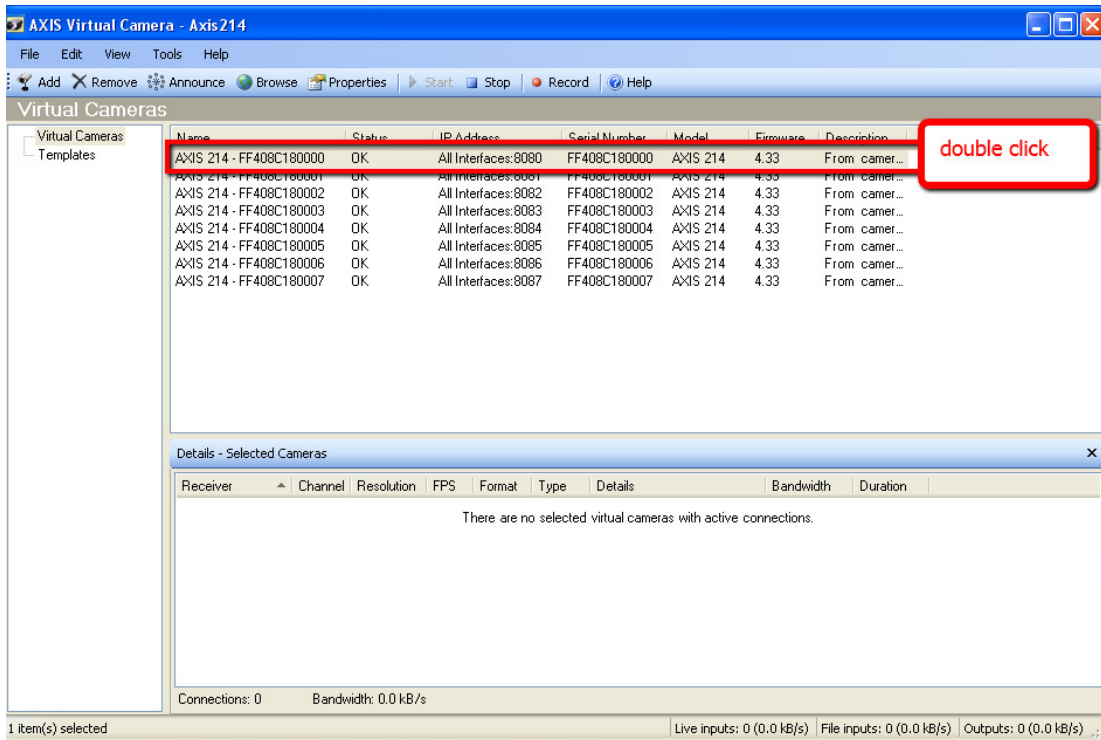
1. Install Axis Virtual Camera

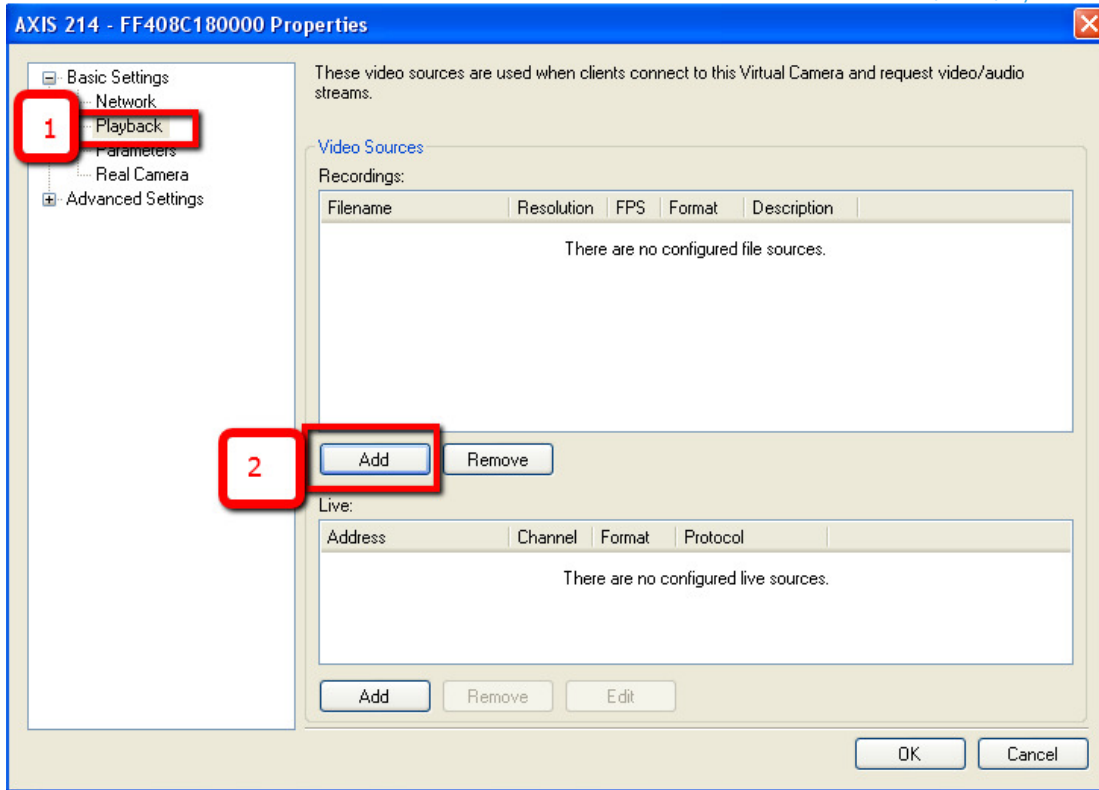


2. Open Axis Virtual Camera

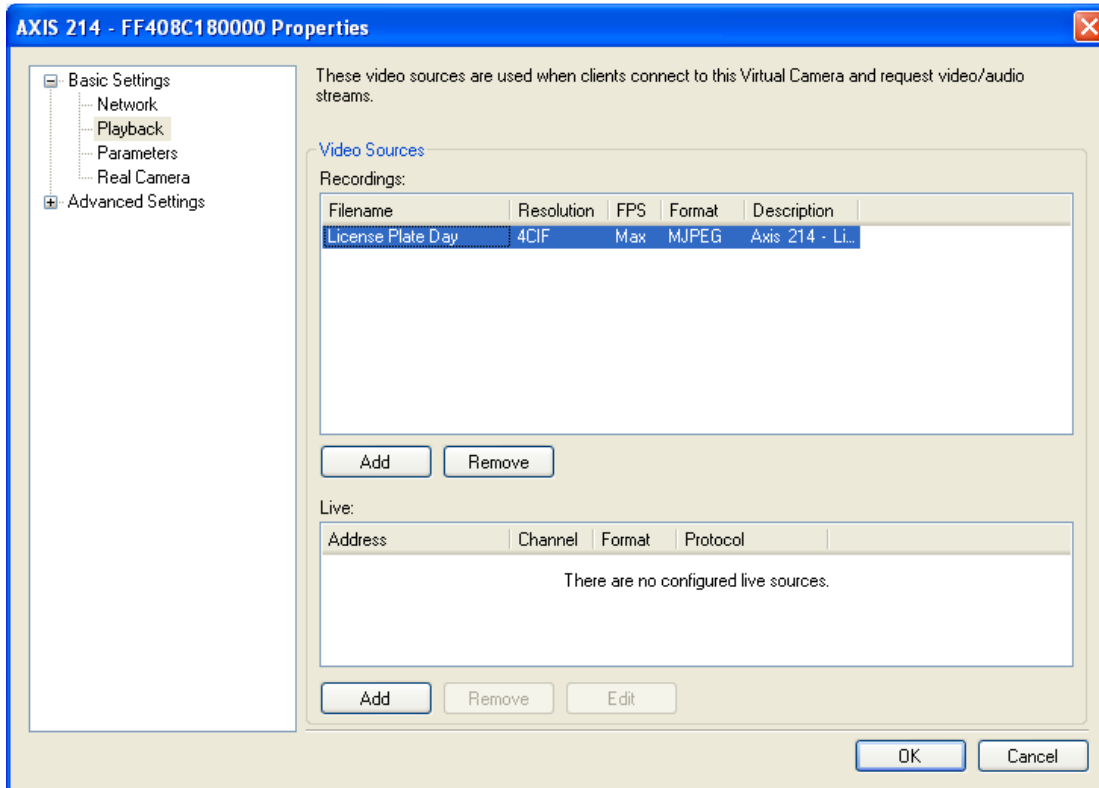


3. Add recorded video

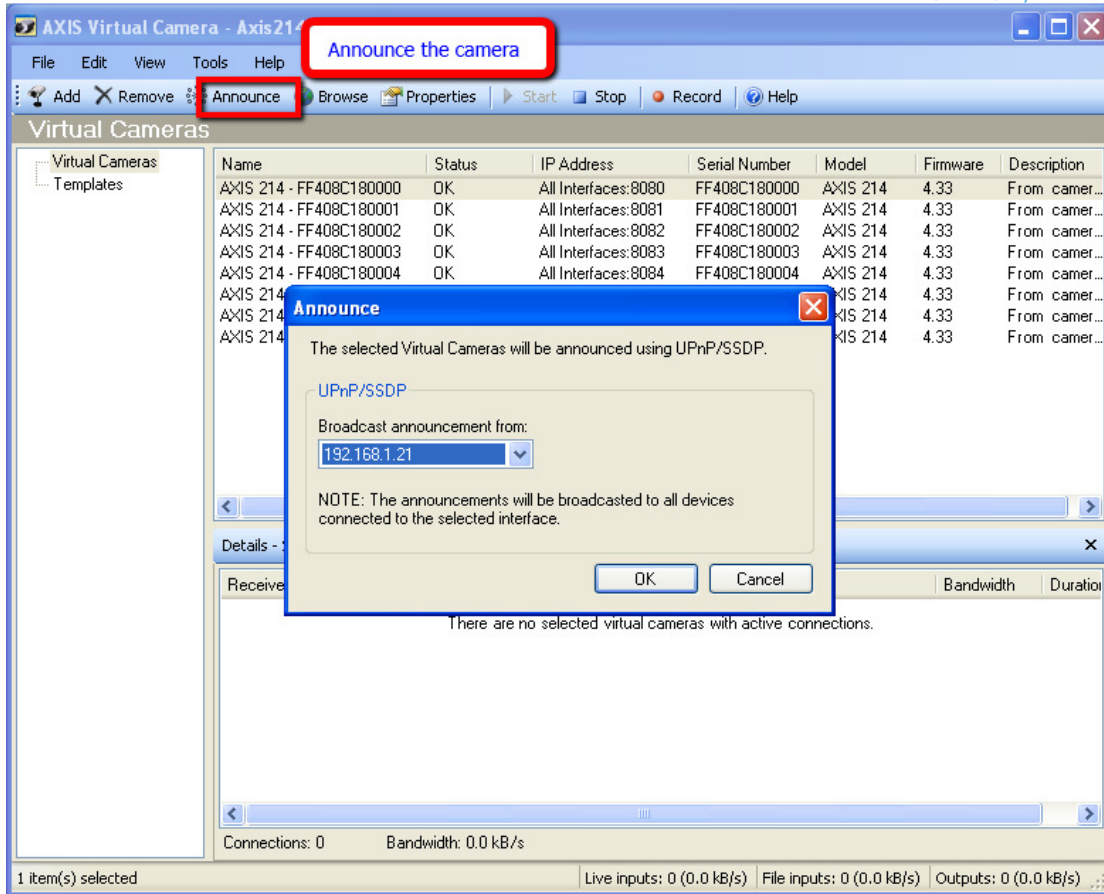




Result:

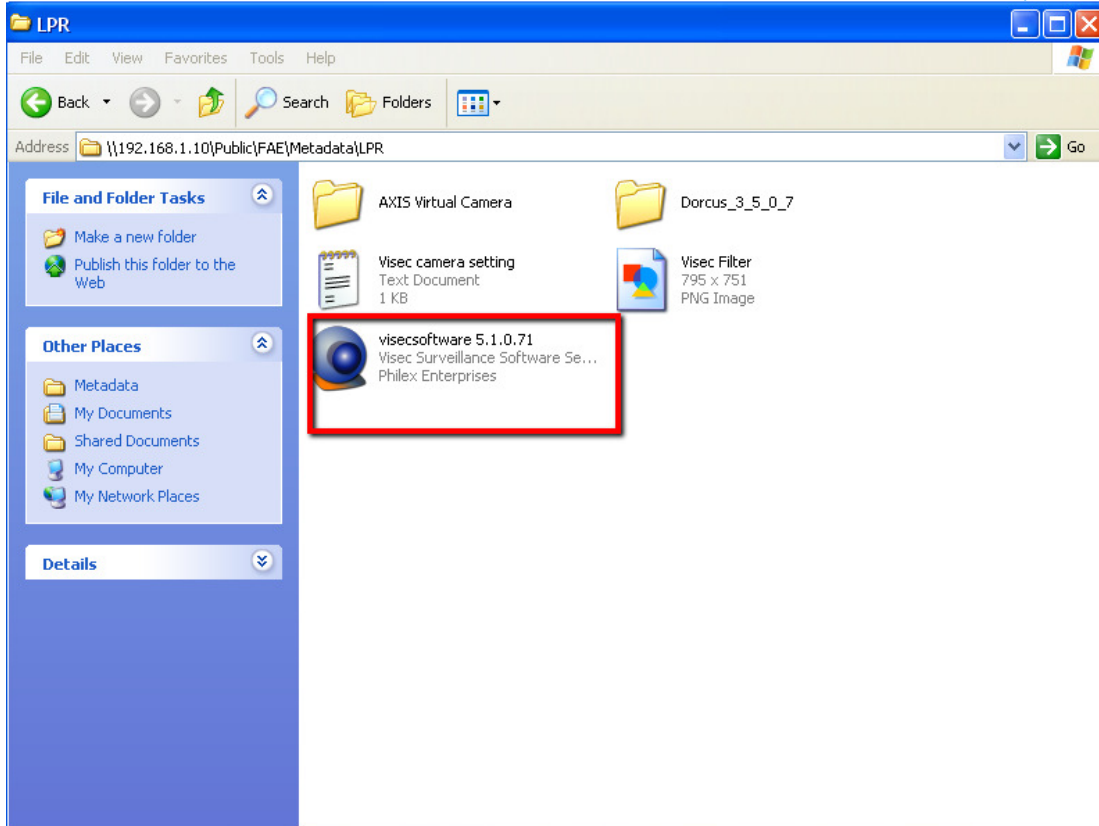



Announce the camera



-Visec

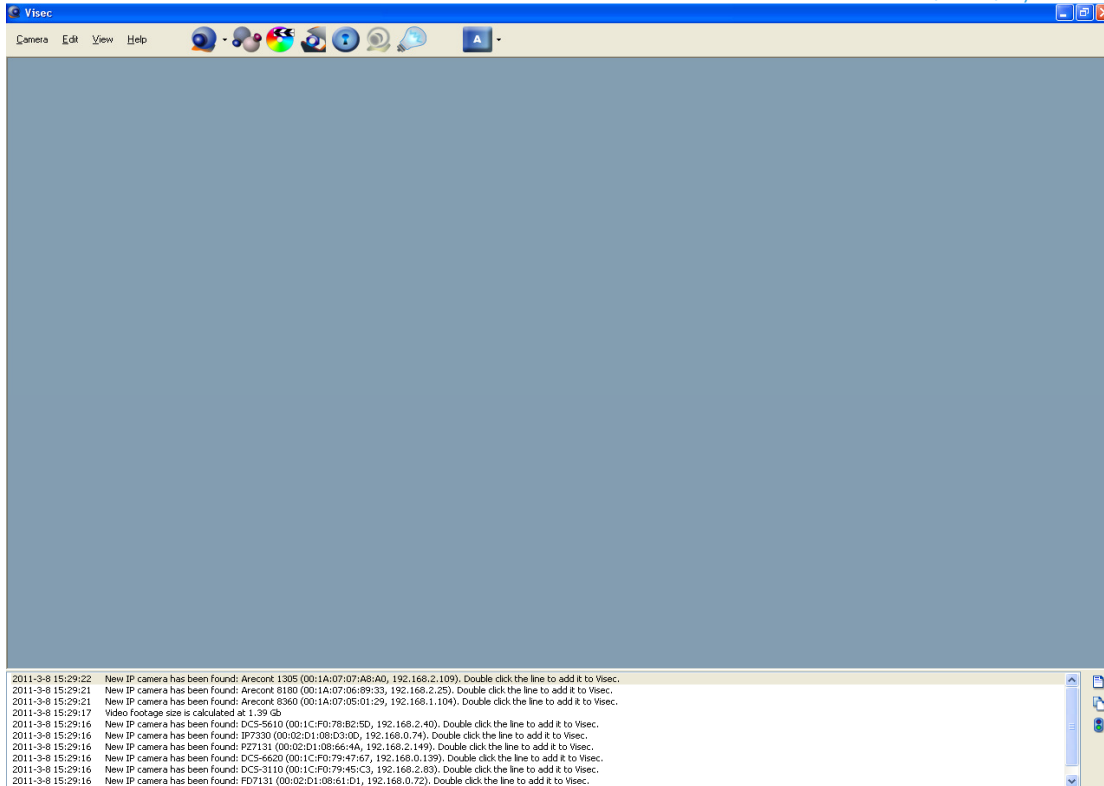
1. install Visec LPR



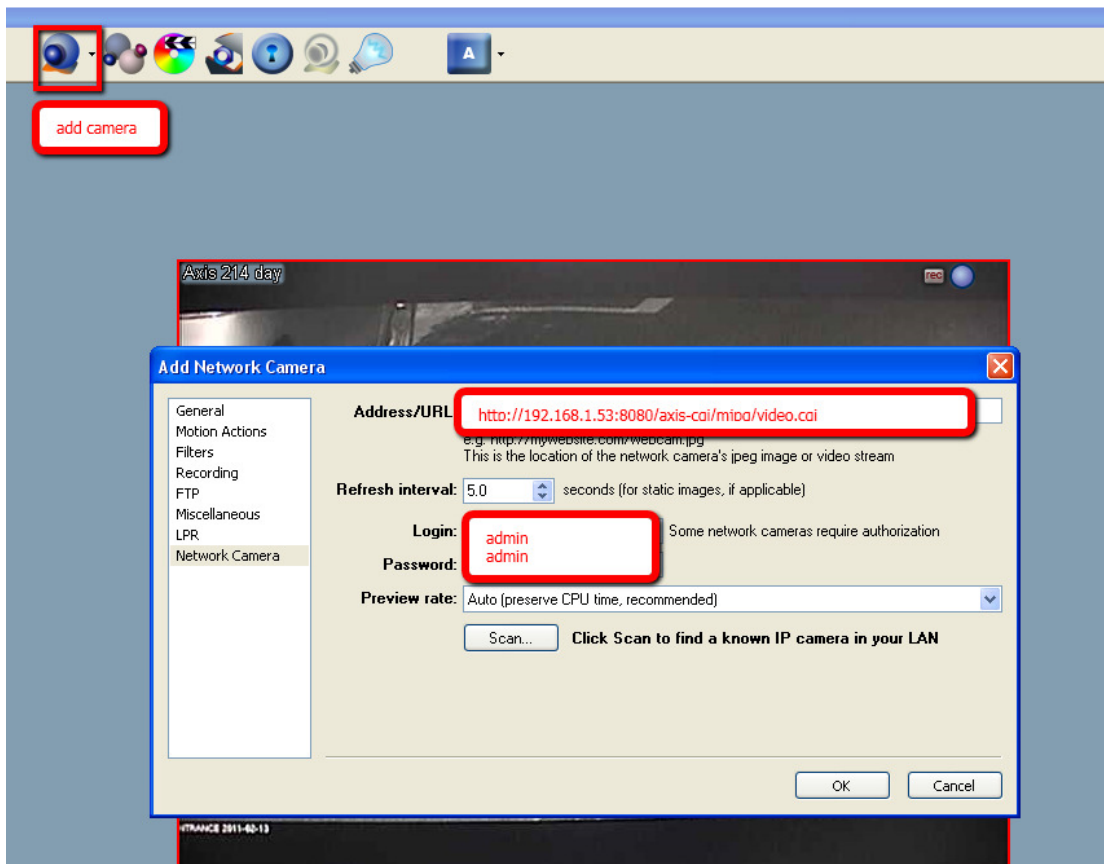
*select  Evaluation version

*install Axis Decoder

2. Open Visec

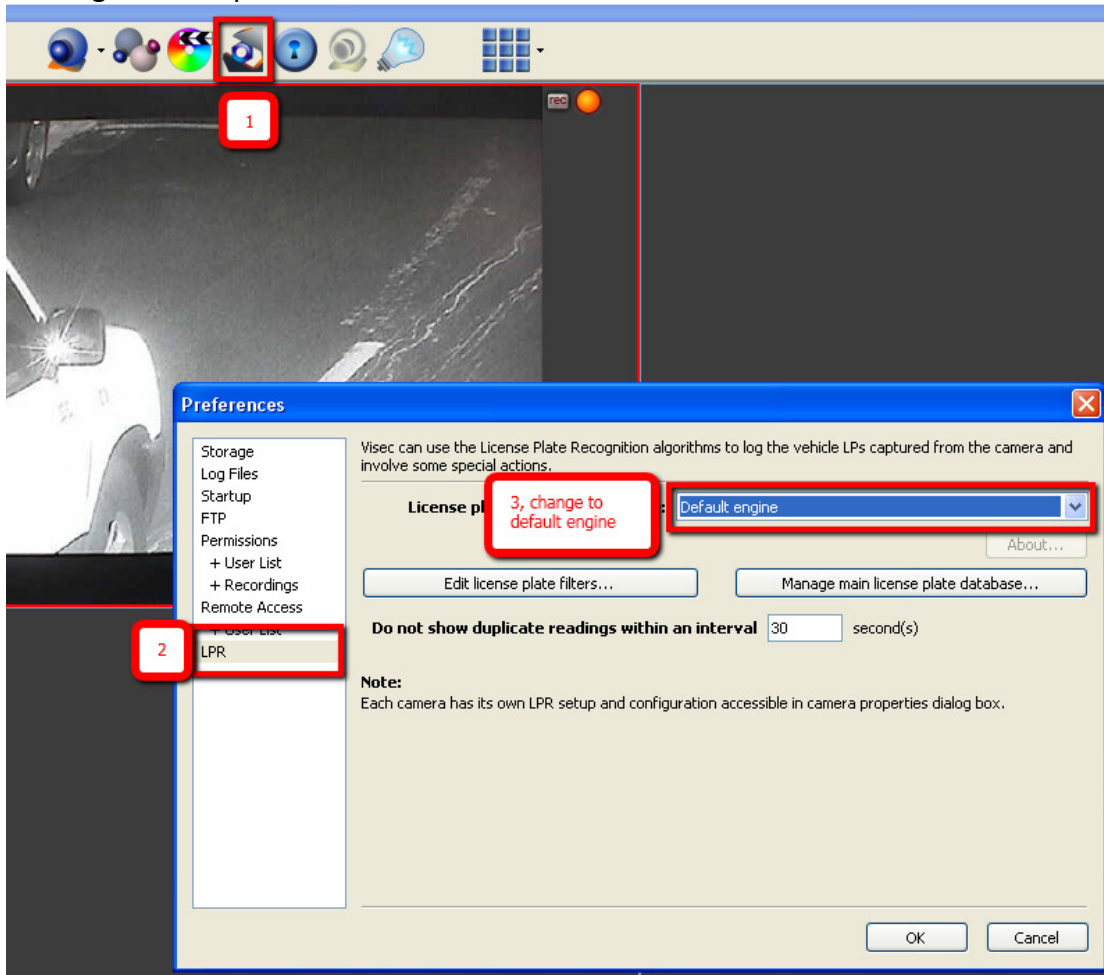


3. Add camera

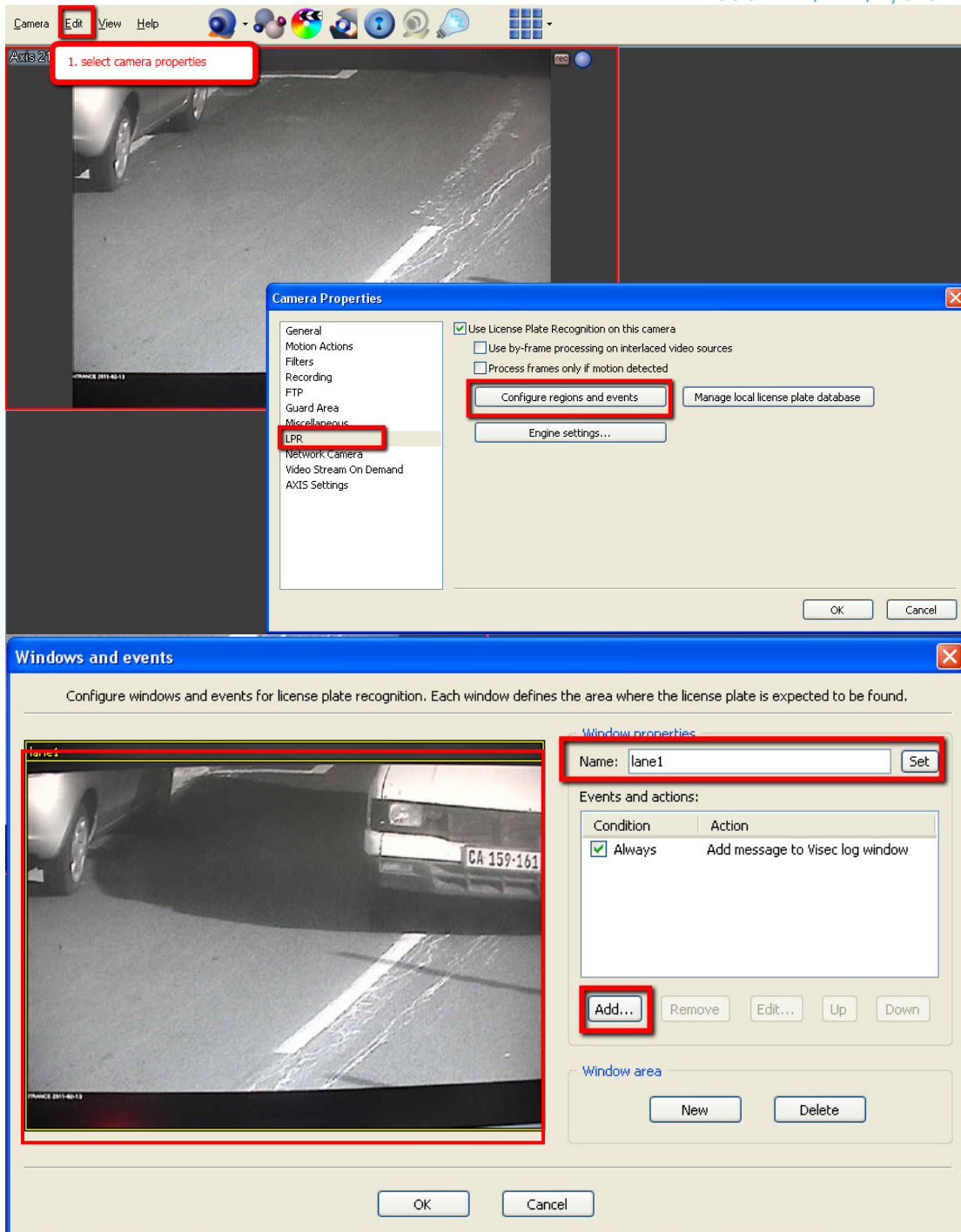


*http://<IP>:<PORT>/axis-cgi/mjpg/video.cgi
*admin / admin

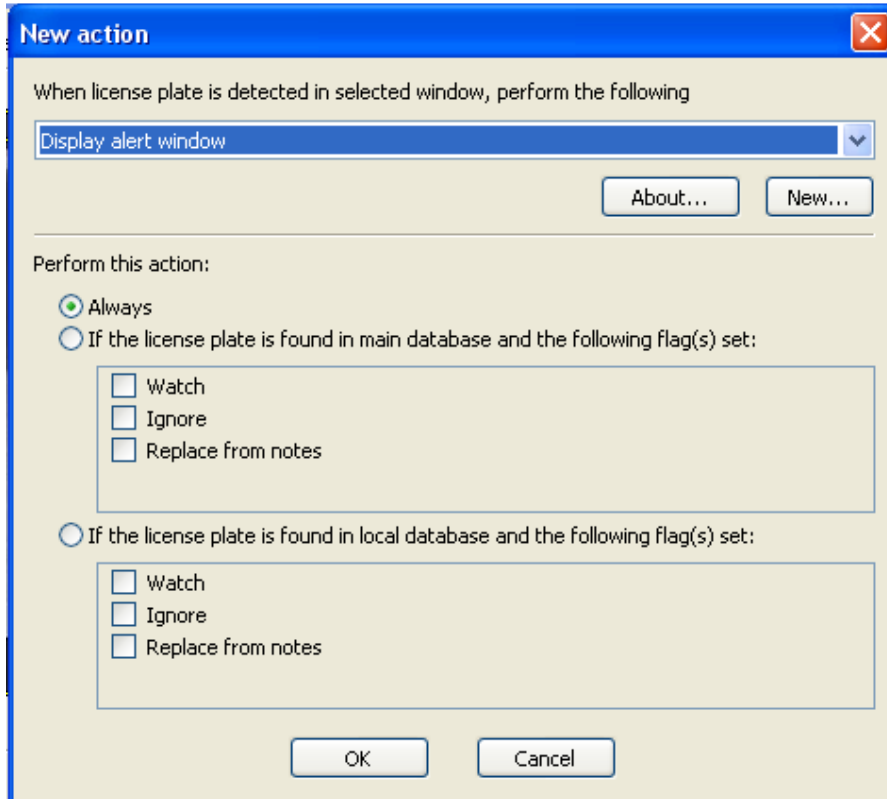
4. Change camera preferences



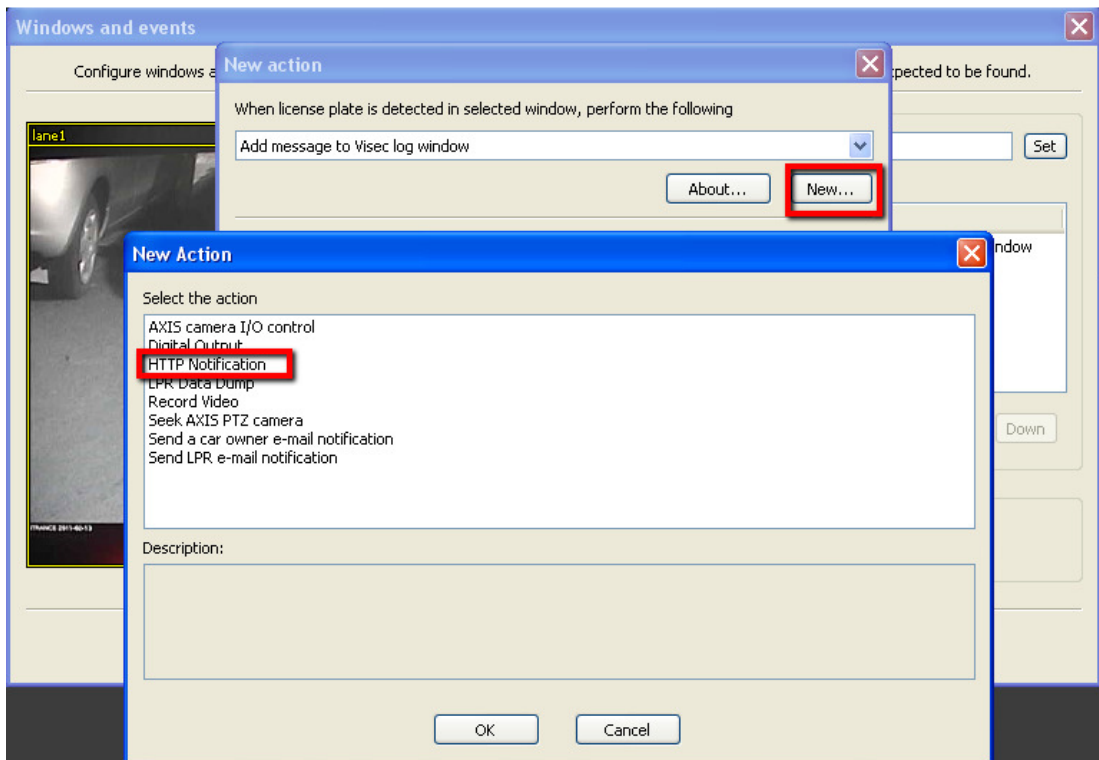
5. Configure regions and events

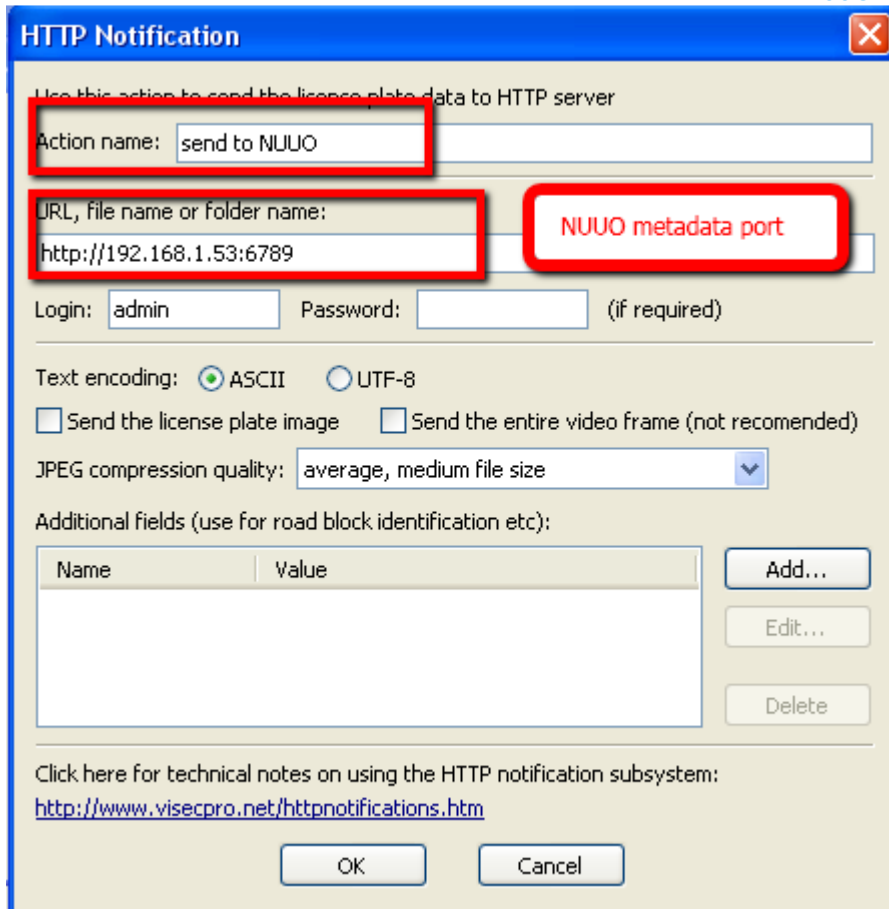


6. Add Action – Display Alert window



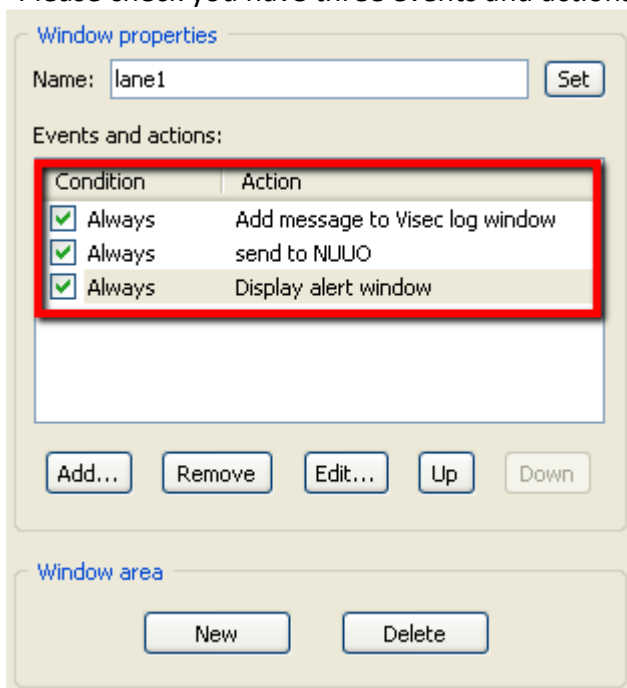
7. Add Action – HTTP Notification



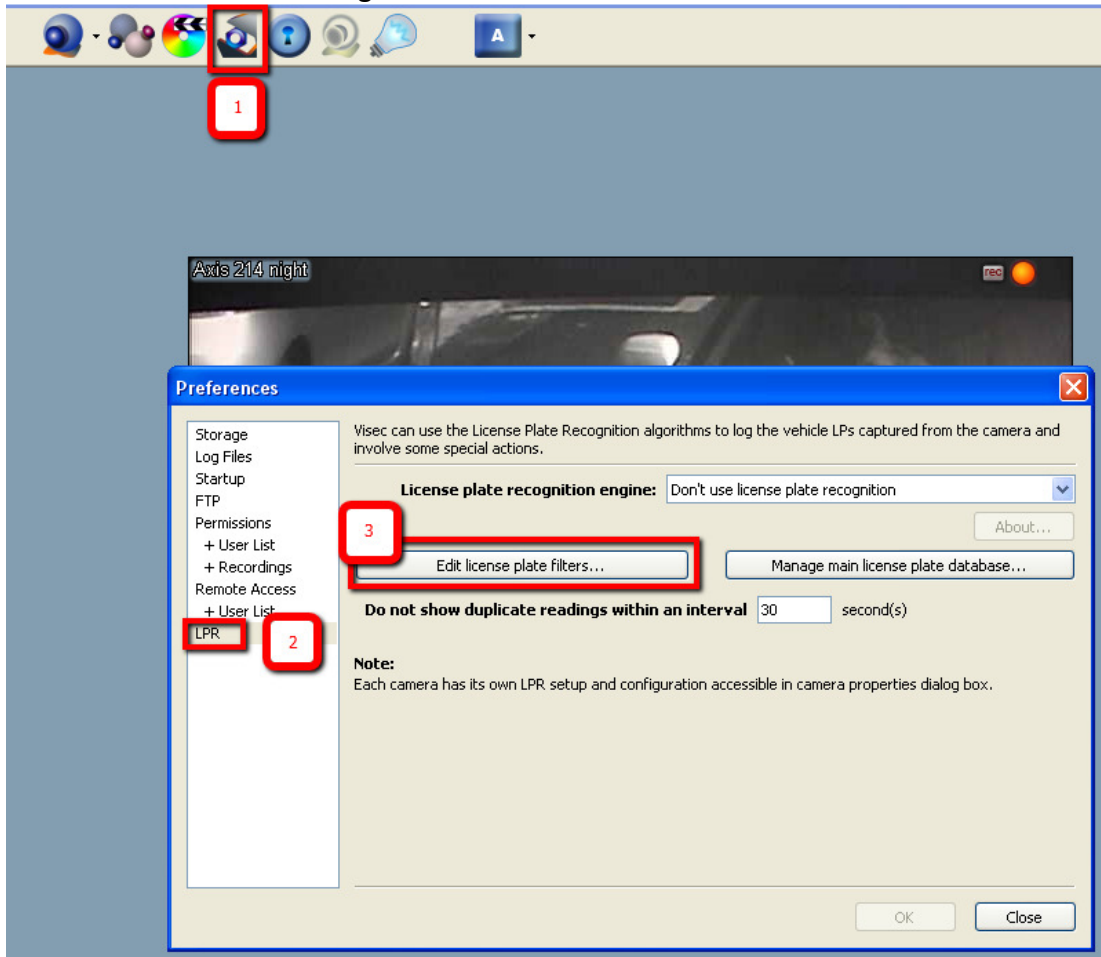


*Please set port from Mainconsole Metadata Application

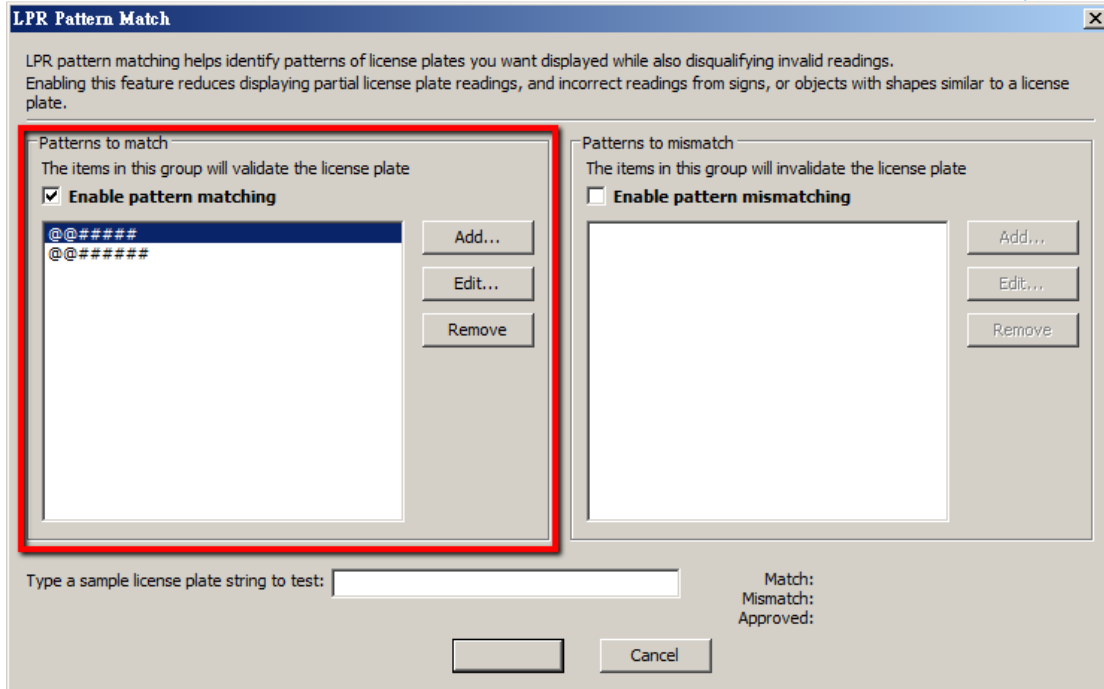
*Please check you have three events and actions



8. Set filter to increase recognition rate:

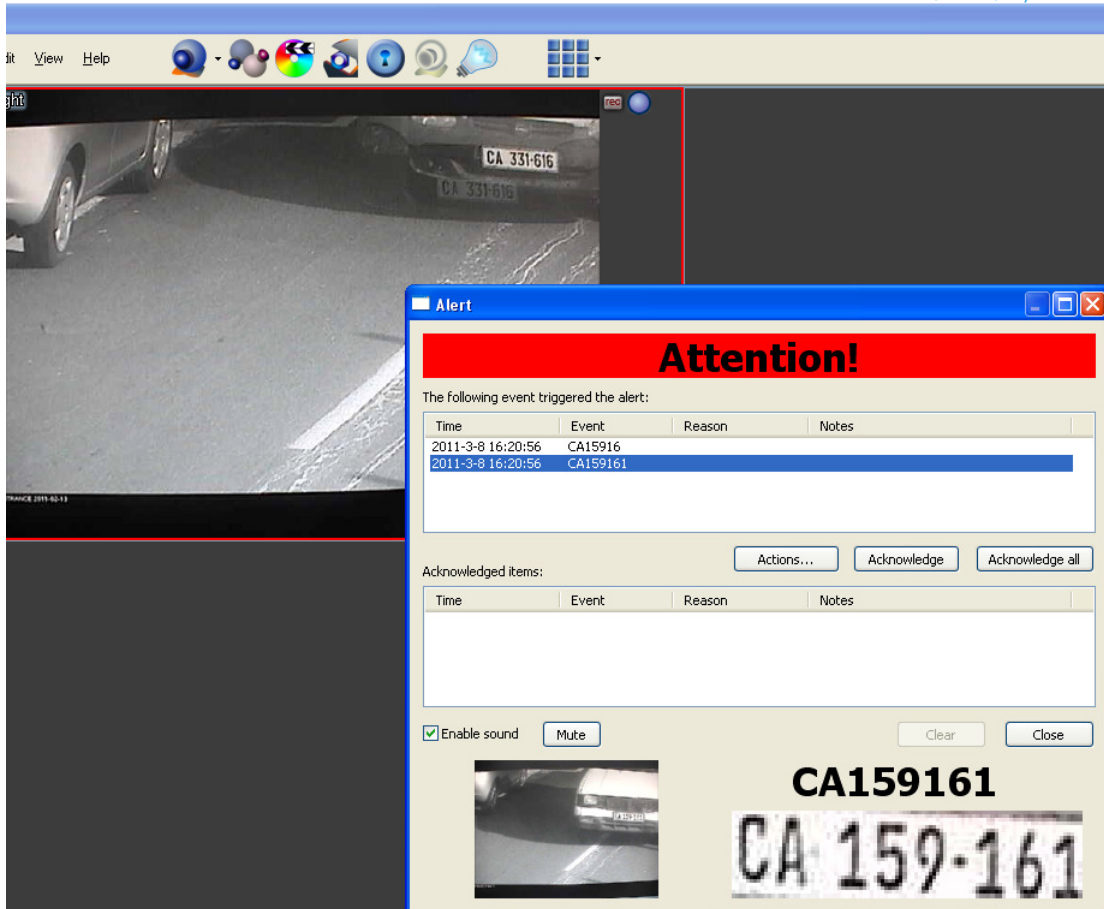


@@##### and @@#####



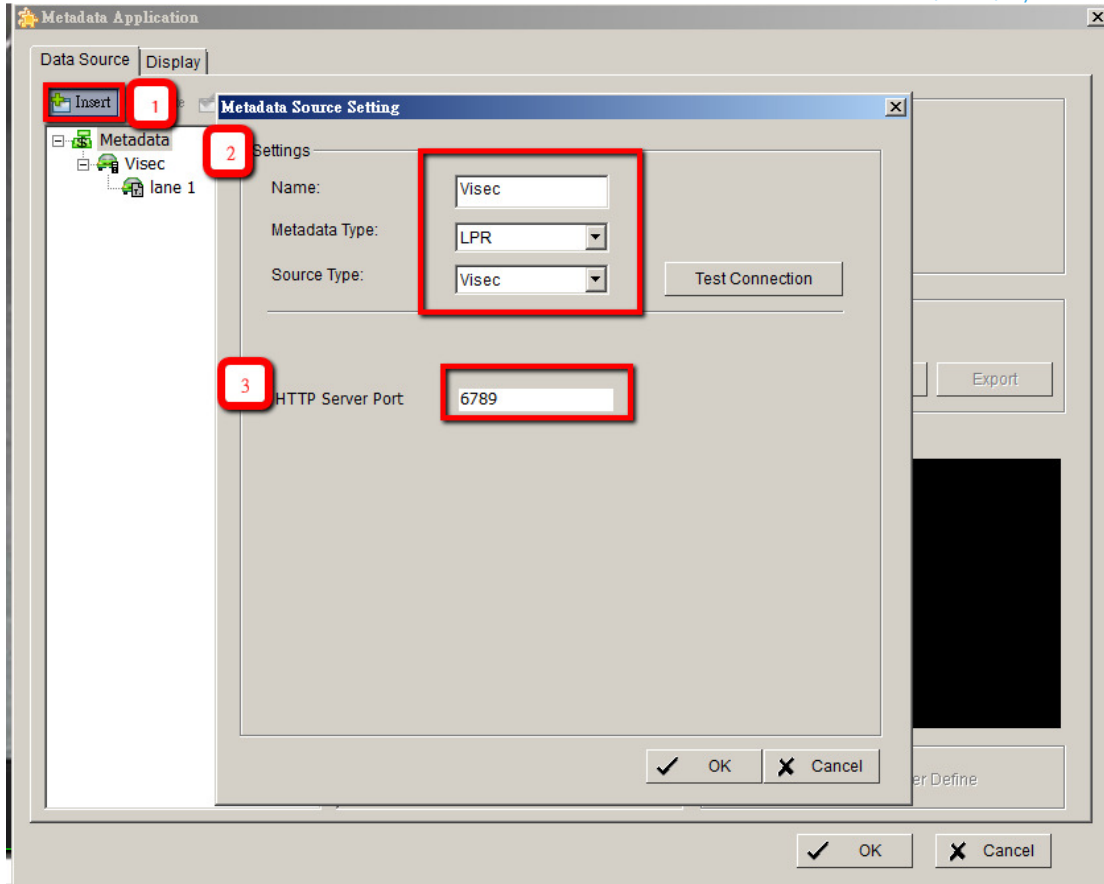
You can check as the following:

(The video shall appear within 30 seconds or 90 seconds. If not, please shut the AXIS Virtual Camera and Visec, and start again.)

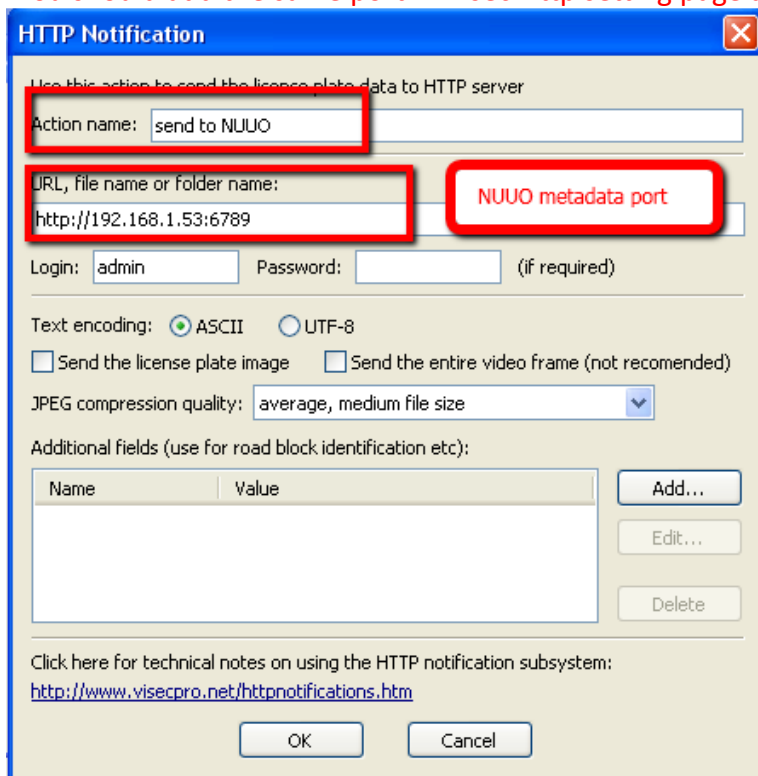


-MainConsole V3.5

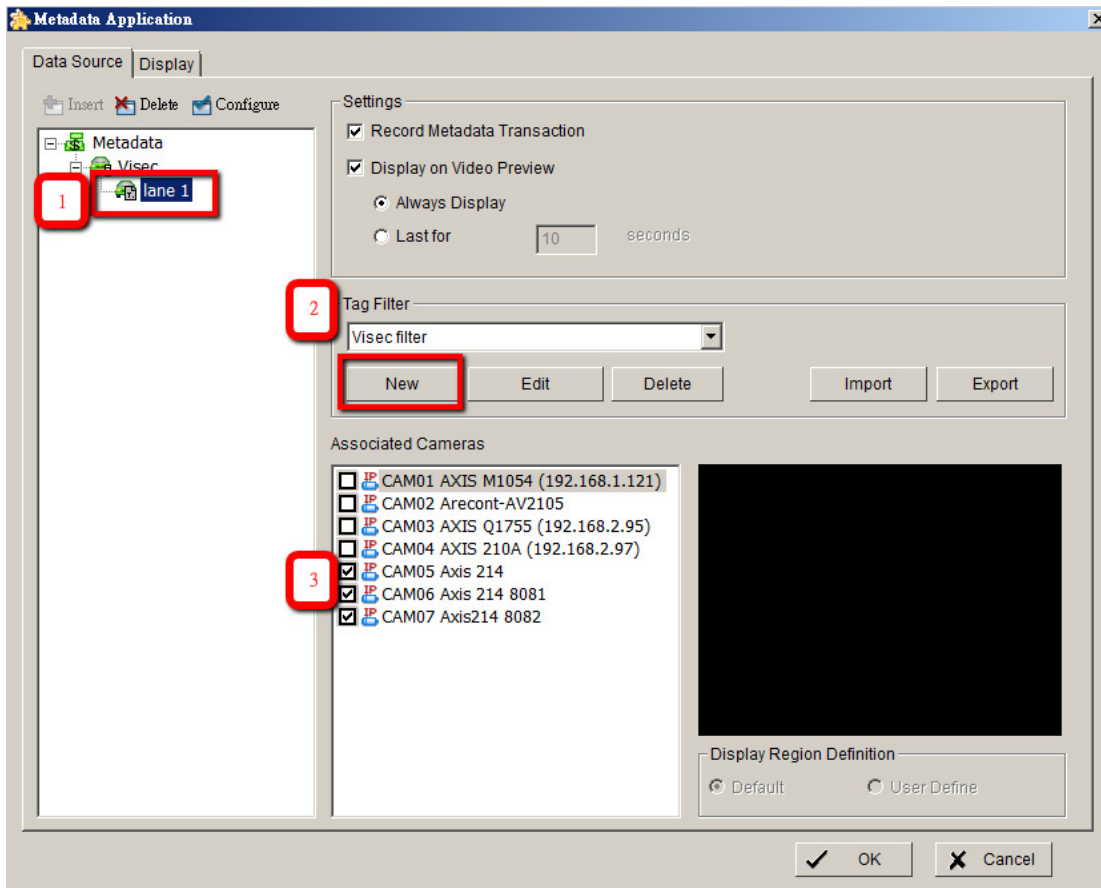
1. Add Metadata Source



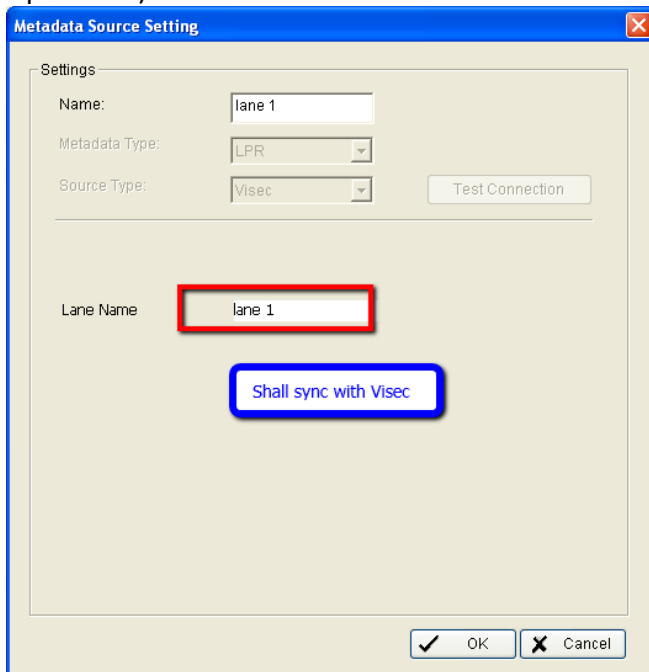
*You should add the same port in Visec Http setting page as the following:

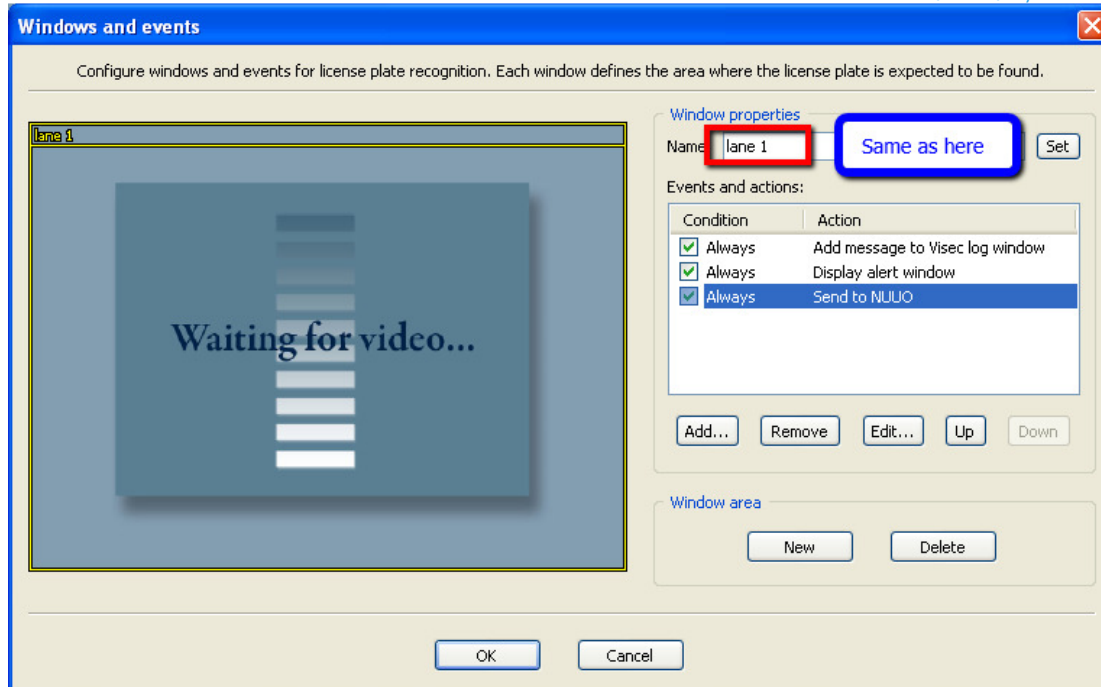


2. Add Metadata canal

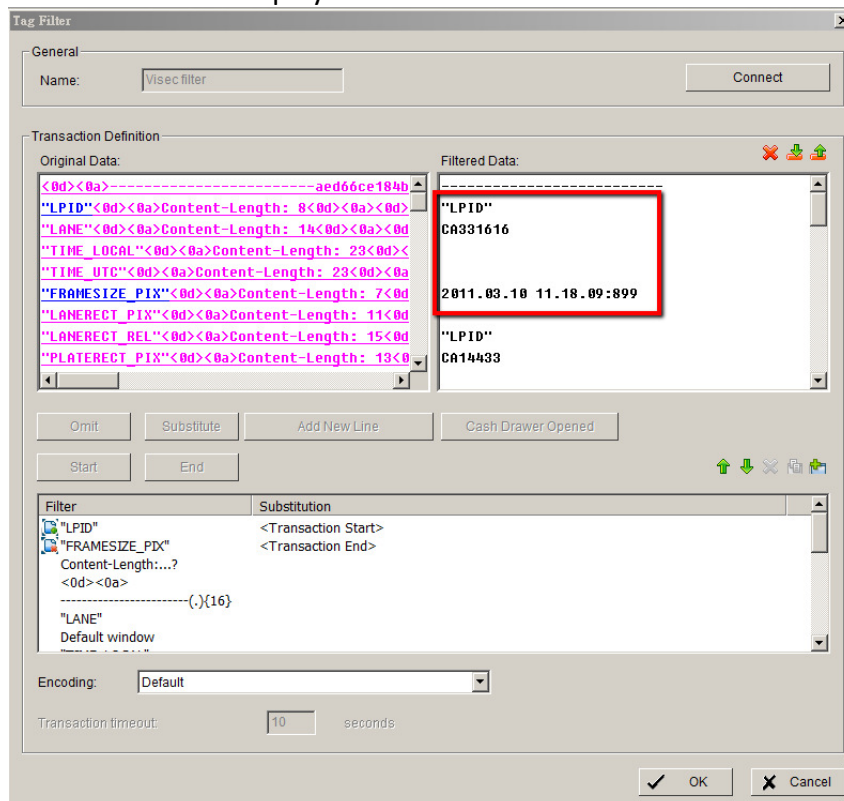


Please double click “lane 1”, and check if the Lane Name is same as in Visec setting. (the below 2 pictures.)

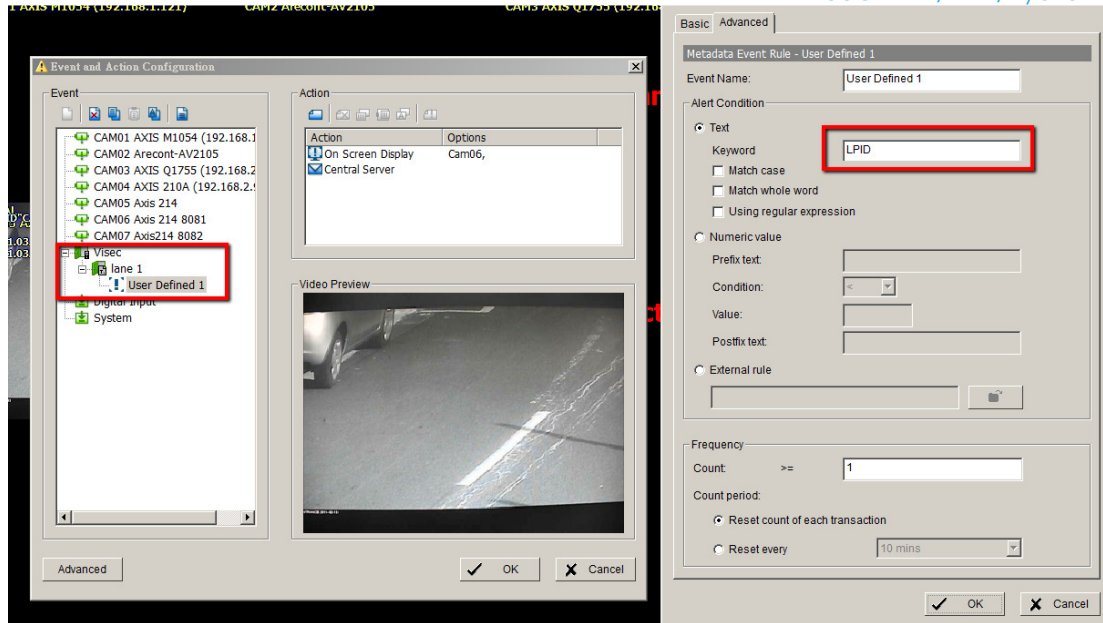




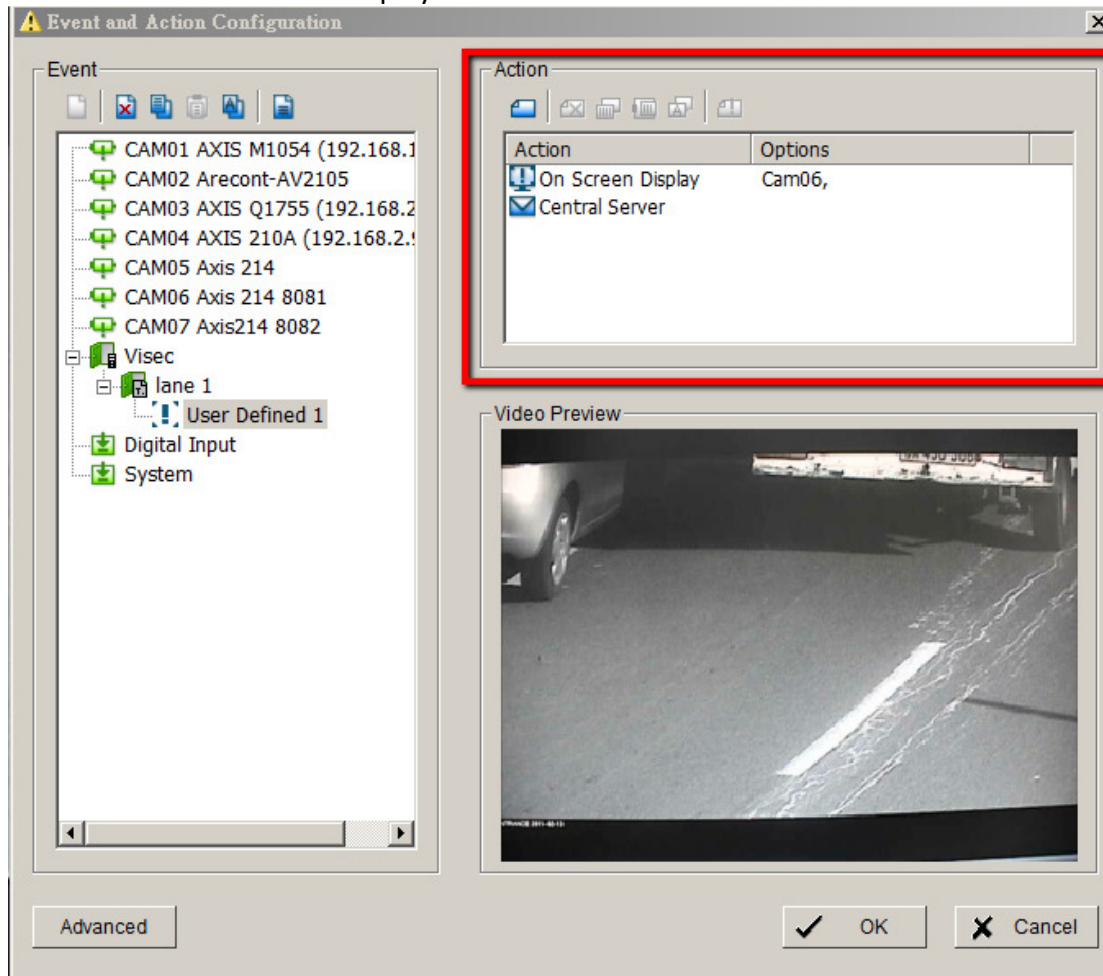
2-1. Set filter and display



3. Set event – user defined 1



*You can set keyword to trigger events
 3-2 Add action: on screen display and central server



You can check Mainconsole as the following

